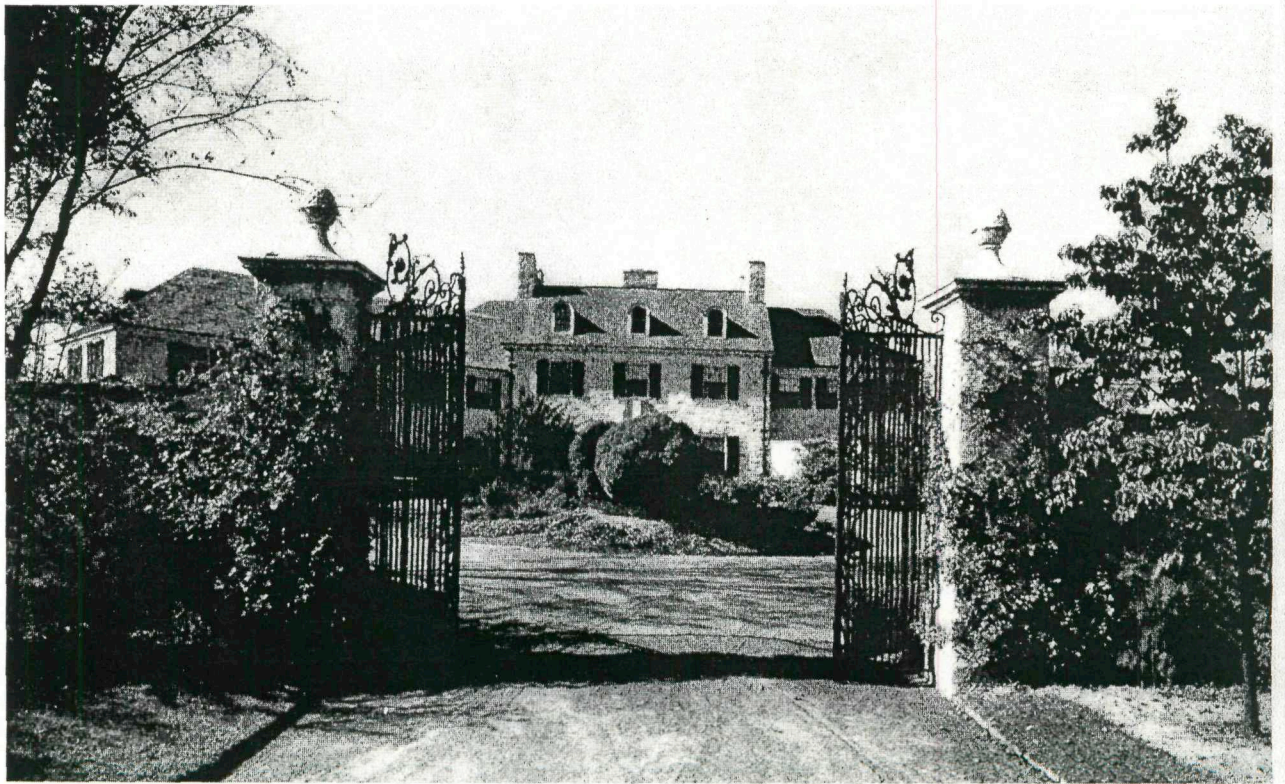


SPRING HILL FARM

Haverford Township, 1924

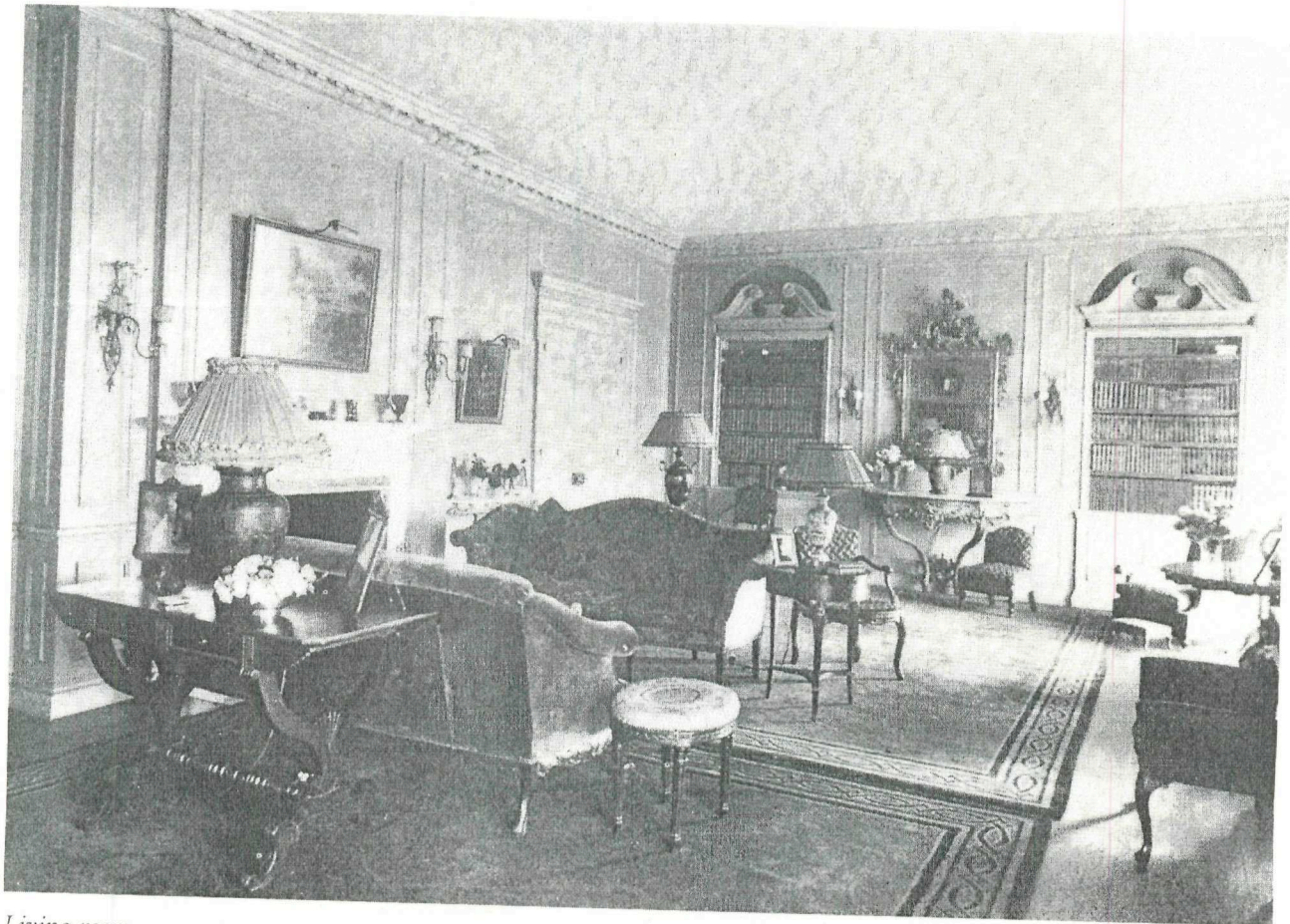
A RARE MAIN LINE UNDERTAKING by prominent New York architect John Russell Pope, Spring Hill Farm was the Haverford residence of distiller J. Hazeltine Carstairs. Best known for his severely formal Beaux-Arts town dwellings and country houses in an archeologically correct Tudor style, Pope here adopted the Pennsylvania vernacular rough stucco and stone, adding a few French elements to create a design nicely balanced between sophistication and simplicity.

Located on 15 acres overlooking the fairways of the Merion Golf Club's West Course, Spring Hill Farm was completed in 1924. Its dogleg plan consists of a central block entrance hall and living room placed between the dining room and the sun parlor, with a large service wing extension angled to the main block. On the second floor are a master bedroom suite, three additional bedrooms, and five servant's rooms.

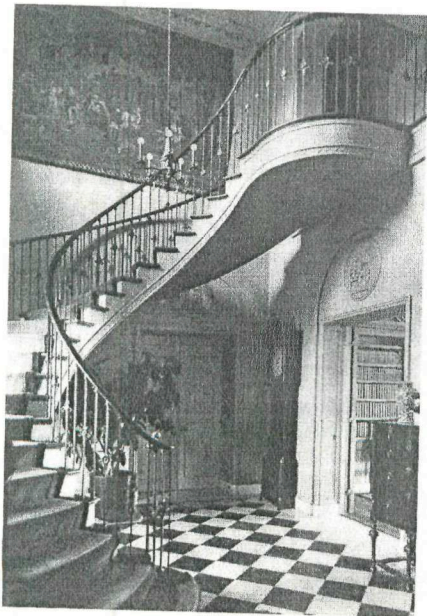


Entrance facade through courtyard gates

SPRING HILL FARM



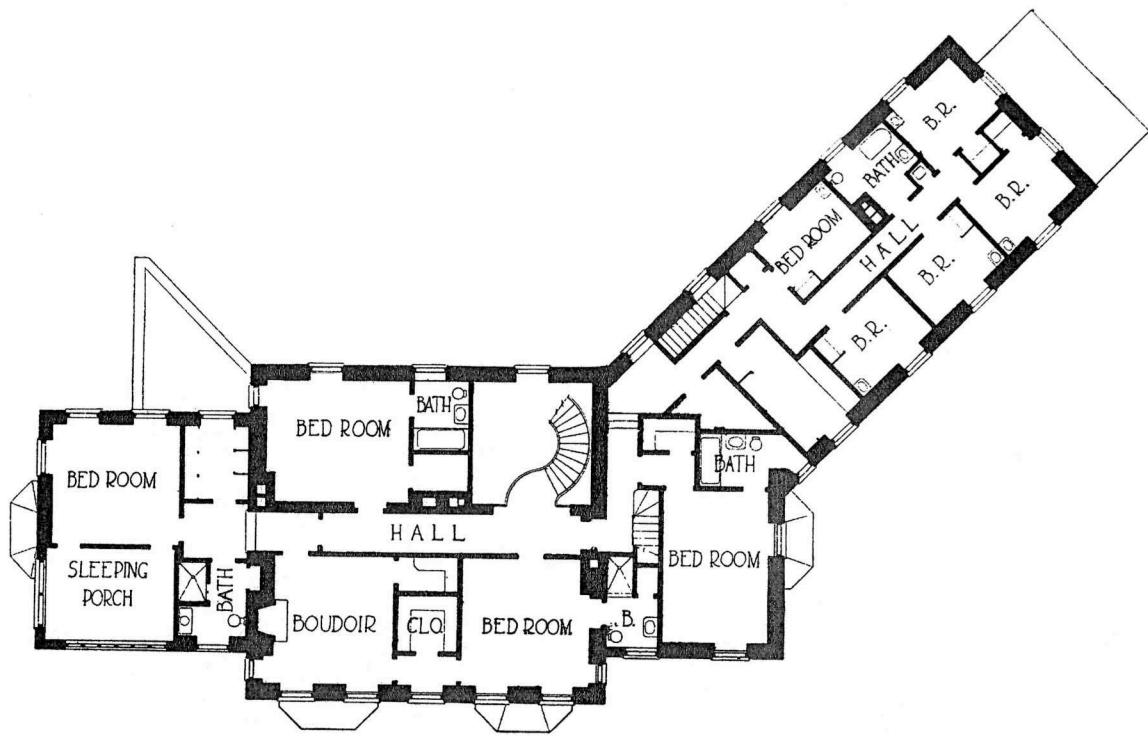
Living room



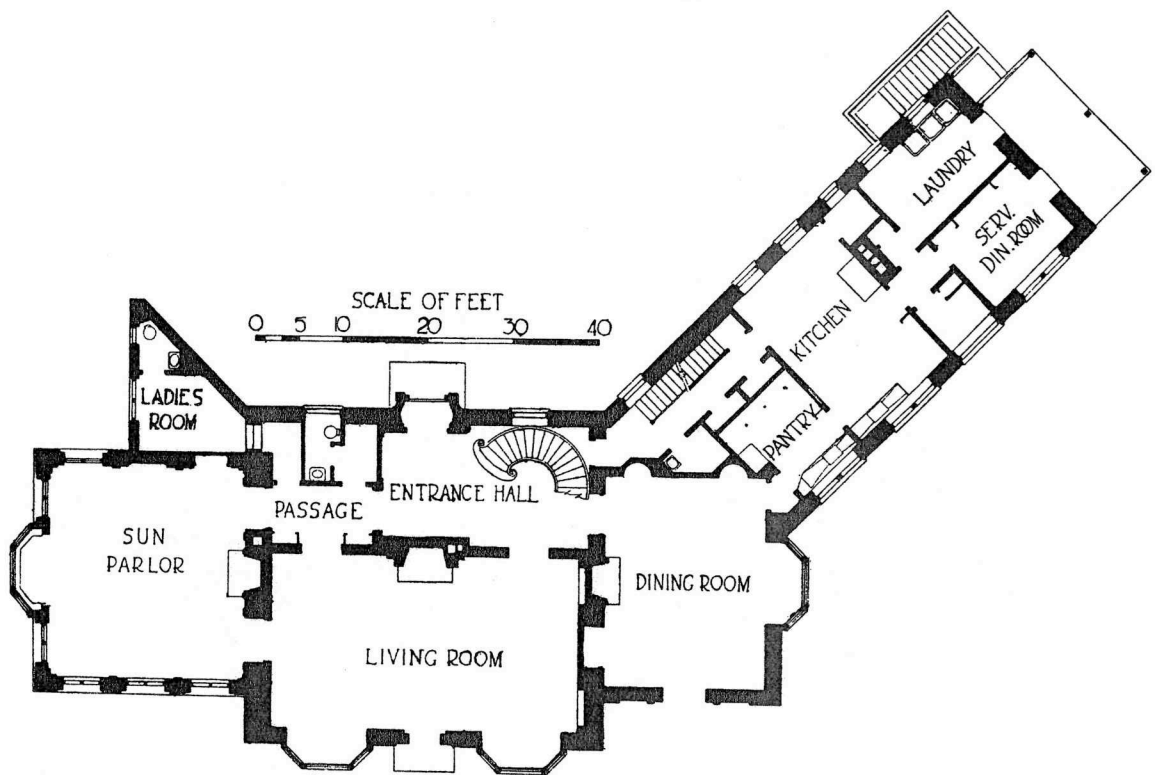
Entrance hall



Sun parlor



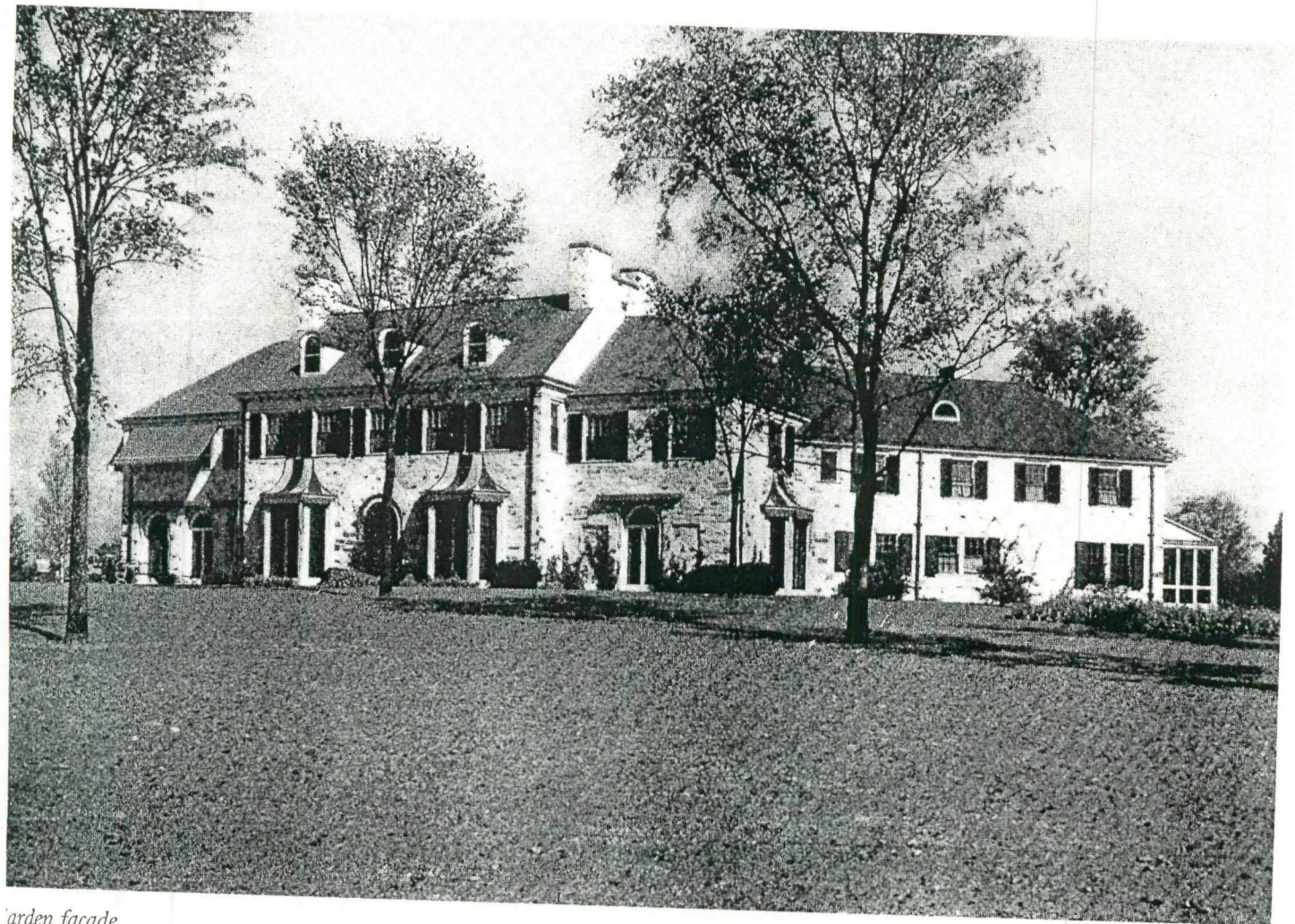
SECOND FLOOR



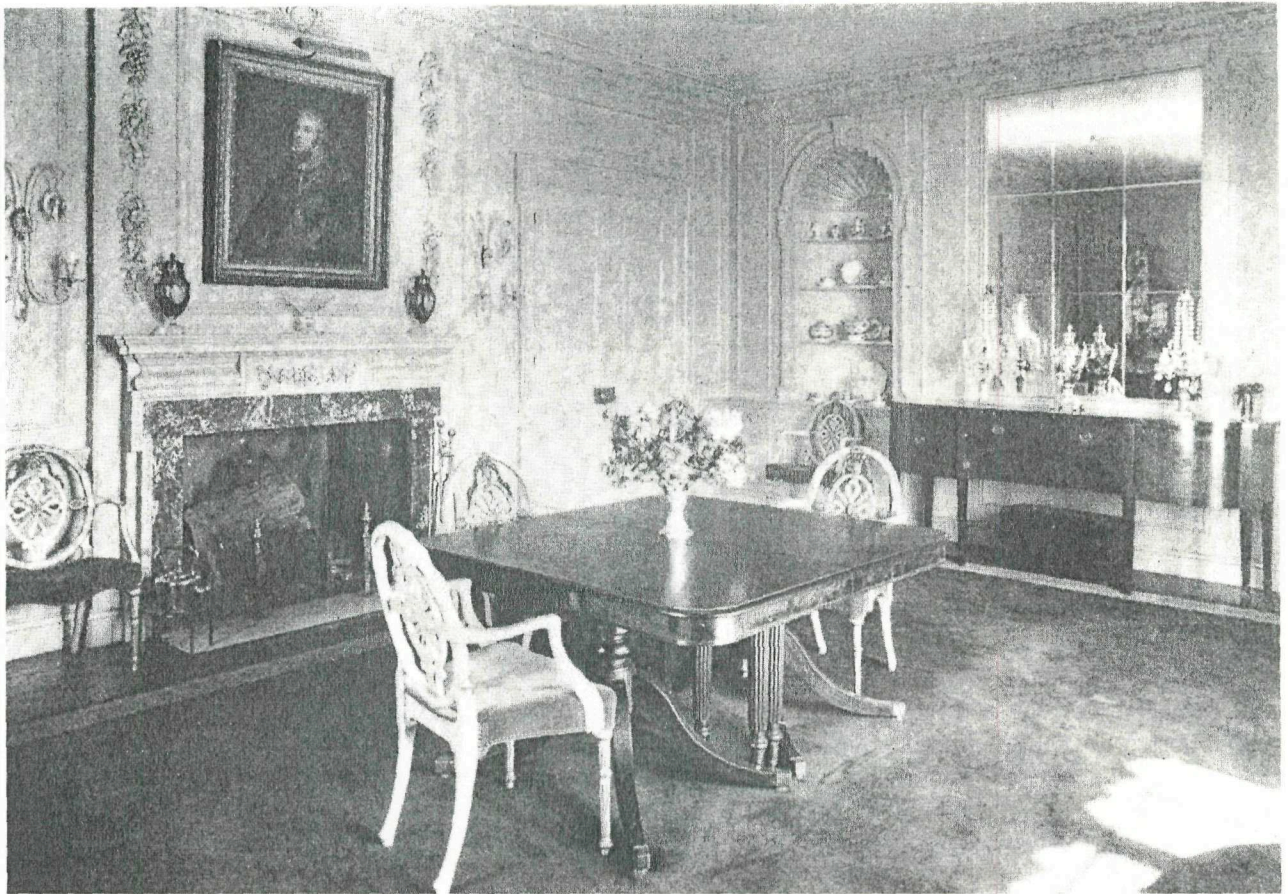
FIRST FLOOR

First and second floor plans

SPRING HILL FARM



arden facade



Dining room

Decidedly more formal than its exterior, Spring Hill Farm's notable interiors include an entrance hall with sweeping spiral staircase, a Georgian living room, and a marble-tiled sun parlor with seven pairs of French doors that could be left open during the warm weather.

Son of one of the founders of the Carstairs, McCall & Company distillery, J. Hazeltine Carstairs was an executive of the firm as well as vice president and secretary of the Stewart Distilling Company. An avid sportsman who owned game preserves in New Jersey and Florida, he retired in 1919, when Prohibition shuttered the family business. Spring Hill Farms remains a private residence on reduced acreage.